

**Anti-Chicken IgG (H&L) Antibody (Peroxidase Conjugated)**  
**Polyclonal, Peroxidase (Horseradish)**  
**Catalog # ASR1085****Specification****Anti-Chicken IgG (H&L) Antibody (Peroxidase Conjugated) - Product Information**

Description	<b>Anti-CHICKEN IgG (H&amp;L) (RABBIT) Antibody Peroxidase Conjugated Peroxidase (Horseradish) Chicken Polyclonal WB, E, IC ELISA 1:145,000;Western Blot 1:2,500-1:10,000;Immunochemistry 1:1,000-1:5,000 Lyophilized IgG IgG (H&amp;L) 0.02 M Potassium Phosphate, 0.15 M Sodium Chloride, pH 7.2 Chicken IgG whole molecule 500 µL Restore with deionized water (or equivalent) 10 mg/mL Bovine Serum Albumin (BSA) - Immunoglobulin and Protease free 0.01% (w/v) Gentamicin Sulfate. Do NOT add Sodium Azide!</b>
Conjugate	
Target Species	
Clonality	
Application	
Application Note	
Physical State	
Host Isotype	
Target Isotype	
Buffer	
Immunogen	
Reconstitution Volume	
Reconstitution Buffer	
Stabilizer	
Preservative	

**Anti-Chicken IgG (H&L) Antibody (Peroxidase Conjugated) - Additional Information****Shipping Condition**

Ambient

**Purity**

This product was prepared from monospecific antiserum by immunoaffinity chromatography using Chicken IgG coupled to agarose beads followed by solid phase adsorption(s) to remove any unwanted reactivities. Assay by immunoelectrophoresis resulted in a single precipitin arc against anti-Peroxidase, anti-Rabbit Serum and Chicken IgG. Some light chain cross reactivity may be observed against chicken immunoglobulins.

**Storage Condition**

Store vial at 4° C prior to restoration. For extended storage aliquot contents and freeze at -20° C or below. Avoid cycles of freezing and thawing. Centrifuge product if not completely clear after standing at room temperature. This product is stable for several weeks at 4° C as an undiluted liquid. Dilute only prior to immediate use.

**Precautions Note**

This product is for research use only and is not intended for therapeutic or diagnostic applications.

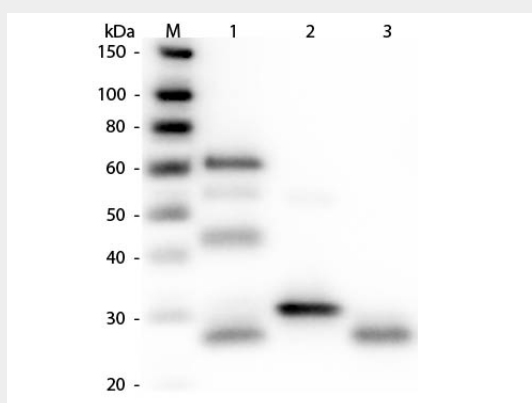
## Anti-Chicken IgG (H&L) Antibody (Peroxidase Conjugated) - Protein Information

## Anti-Chicken IgG (H&L) Antibody (Peroxidase Conjugated) - Protocols

Provided below are standard protocols that you may find useful for product applications.

- [Western Blot](#)
- [Blocking Peptides](#)
- [Dot Blot](#)
- [Immunohistochemistry](#)
- [Immunofluorescence](#)
- [Immunoprecipitation](#)
- [Flow Cytometry](#)
- [Cell Culture](#)

## Anti-Chicken IgG (H&L) Antibody (Peroxidase Conjugated) - Images



Western Blot of Anti-Chicken IgG (H&L) (RABBIT) Antibody . Lane M: 3  $\mu$ l Molecular Ladder. Lane 1: Chicken IgG whole molecule . Lane 2: Chicken IgG F(c) Fragment . Lane 3: Chicken IgG F(ab) Fragment . All samples were reduced. Load: 50 ng per lane. Block: MB-070 for 30 min at RT. Primary Antibody: Anti-Chicken IgG (H&L) (RABBIT) Antibody 1:3,000 for 60 min at RT. Secondary antibody: Anti-Rabbit IgG (GOAT) Peroxidase Conjugated Antibody 1:40,000 in MB-070 for 30 min at RT. Predicted/Observed Size: 25 and 72 kDa for Chicken IgG, 25 kDa for F(c) and F(ab). Chicken F(c) migrates slightly higher.

## Anti-Chicken IgG (H&L) Antibody (Peroxidase Conjugated) - Background

Anti-Chicken IgG antibody generated in rabbit detects specifically chicken IgG. This secondary antibody anti-Chicken is ideal for investigators who routinely perform ELISA, Sandwich ELISA, titration assays, western-blot, immunoprecipitation and more generally immunoassays.